

**NATIONAL STOCK EXCHANGE OF INDIA LIMITED****DEPARTMENT : PRIMARY MARKET SEGMENT**

Download Ref No : NSE/CMTR/32163	Date : April 05, 2016
Circular Ref. No : 09/2016	

All Members,

**Mock Trading from Disaster Recovery (DR) site for OFS on Saturday, April 09, 2016**

Exchange shall be conducting a mock trading session on Saturday, April 09, 2016 **Disaster Recovery (DR) site** as per the following schedule:

**Mock trading from DR Site (Kindly change TAP settings as per Annexure – 2):**

Saturday, April 09, 2016	Start Time	End Time
Normal Market	10:00 hrs	14:00 hrs

**Re-Log in Session from DR Site (Kindly change TAP settings as per Annexure - 3):**

Saturday, April 09, 2016	Start Time	End Time
Re-Login time	16:00 hrs	16:30 hrs

Important instruction for Members

- **Kindly participate actively in the mock trading session to check the connectivity and to avoid login problems in live trading sessions from DR site.**
- The Connect2NSE and Extranet facility will not be available for members
  - From 10 pm on Friday, April 08, 2016 to 6:30 pm on Saturday, April 09, 2016.
  - From 10 pm on Tuesday, April 12, 2016 to 07:00 am. on Wednesday, April 13, 2016
- Vsat/Lease-line members are requested to connect to below mentioned IP address for Extranet from April 09, 2016 to April 12, 2016.
  - Extranet - 172.18.125.71
- New/revised announcements with respect to mock trading on April 09, 2016 and any other information, if any, shall be available on the website [www.nseindia.com](http://www.nseindia.com).
- In case of any queries please call Toll Free no: 1800 266 0053.

**For and on behalf of**

**National Stock Exchange of India Limited**

**Khushal Shah**  
**Chief Manager**

<b>Toll Free No</b>	<b>Fax No</b>	<b>Email id</b>
1800 266 0053	+91-22-26598155	ipo_trade@nse.co.in

## Annexure 1

### Issue Details for Mock – OFS

**OFS details:**

Company Name	TEST OFS Limited
Symbol & Series	TESTOFS
Series	IS (Non retail category) RS (Retail category – Bid value < or = Rs 2 lacs)
Issue Size	100,00,000 equity shares
Bidding at Cut-off - 'RS' series	Applicable
Floor Price	Rs 100
Market Lot	1 Equity share
Tick Size	Rs 0.05

**Members are requested to note that order entry shall be available for retail and Non retail category for mock trading session from DR site.**

## Annexure - 2

### TAP configuration for Mock Trading from DR site on Saturday, April 09, 2016

#### TAP Software details:

Sr. no.	Setup Name	Version	OS	Extranet path
1	TAP_1.1.4_Setup.exe	1.1.4	Windows	/Common/IPO-OFS/WinTAP
2	TAP_7.0.7_Setup.sh, TAP_7.0.7_SetupFiles.zip	7.0.7	Linux	/Common/IPO-OFS/LinTAP

#### INTEGRATED WINDOWS TAP CONFIGURATION

- 1) Start TCMS.
- 2) Under the menu bar, select the TAB named 'TAP'.
- 3) Go to TAP Configuration and select the market segment you want to configure.
- 4) In the configuration dialog, select "BCP" Radio Button, below that select "Live" radio button, after which your screen will look like this:

**IPO - Configuration**

Broker ID : 2101

TAP Configuration

Box ID : 12

Local IP : 172 . 17 . 4 . 39

WAN IP : 172 . 17 . 4 . 39

TAP Port : 9604

FIX Port : 0

Connection Type :  Lease Line  VSAT

Enable TAP Logging :

Host Configuration

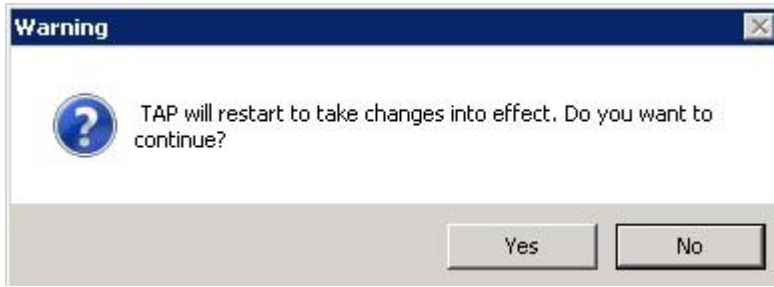
Primary  BCP  DEV

TAP will connect to BCP Environment.  
Select Live or Mock.

Live  Mock

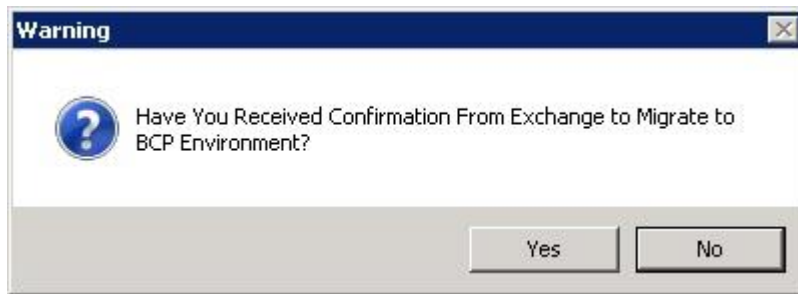
Save Exit

- 5) On clicking Save,  
Prompt below is just a confirmation asked when respective TAP is running.



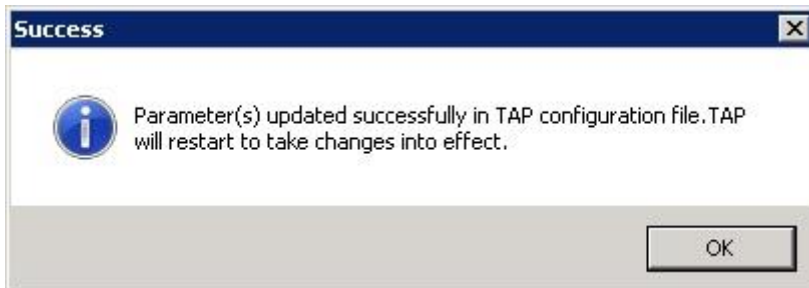
Select Yes

6) Confirmation to Save BCP Environment



Select Yes

- 7) On successful modification, TCMS user will get a response “**Parameter(s) updated successfully in Tap configuration file**” for that particular market as shown in the fig. below. Thus indicating that the changes made are reflected correctly.



## INTEGRATED LINUX TAP CONFIGURATION

- 1) Start the TCMS.
- 2) Select option TAP configuration Menu.
- 3) Then select particular market type, in which you want to make the changes
- 4) To connect to BCP Mock environment please select the option 'Switch to BCP Configuration' and then make sure "Switch to Live Environment" option is selected

```
1. Local IP.....[172.17.6.18]
2. WAN IP.....[172.17.6.18]
3. Box ID.....[12]
4. TAP Port.....[9604]
-. FIX Port.....[0] (Not Configurable).
-. PRIMARY Configuration.      [Current Configuration].
6. Switch to BCP Configuration.
7. Switch to Development Configuration.
8. Connection Type.[Lease Line]
-. Enable TAP Logging (Not Configurable).
10. Change Broker_ID.
11. Switch to Live Environment.
-. Switch to Mock Environment.  [Current Configuration].
-. Save.
-. Save & exit.
0. Exit.
*****

Enter parameter number to modify : 6

Have You Received Confirmation From Exchange to Migrate to BCP Environment.

Do you want to continue (Y/N)? : y

***** [ TAP IPO Configuration Menu ] *****

Broker ID.....[5678]

1. Local IP.....[172.17.6.18]
2. WAN IP.....[172.17.6.18]
3. Box ID.....[12]
4. TAP Port.....[9604]
-. FIX Port.....[0] (Not Configurable).
5. Switch to Primary Configuration.      [Current Configuration].
-. BCP configuration.*
7. Switch to Development Configuration.
8. Connection Type.[Lease Line]
-. Enable TAP Logging (Not Configurable).
10. Change Broker_ID.
11. Switch to Live Environment.
-. Switch to Mock Environment.  [Current Configuration].
13. Save.
14. Save & exit.
0. Exit without saving.
```

5) Then select 'Save' or 'Save & Exit'.

```
Broker ID.....[5678]

1. Local IP.....[172.17.6.18]
2. WAN IP.....[172.17.6.18]
3. Box ID.....[12]
4. TAP Port.....[9604]
-. FIX Port.....[0] (Not Configurable).
5. Switch to Primary Configuration.      [Current Configuration].
-. BCP configuration.*
7. Switch to Development Configuration.
8. Connection Type.[Lease Line]
-. Enable TAP Logging (Not Configurable).
10. Change Broker_ID.
11. Switch to Live Environment.
-. Switch to Mock Environment.      [Current Configuration].
13. Save.
14. Save & exit.
0. Exit without saving.
*****

Enter parameter number to modify : 13

Parameter(s) updated successfully in TAP configuration file. Start TAP Application.

***** [ TAP IPO Configuration Menu ] *****

Broker ID.....[5678]

1. Local IP.....[172.17.6.18]
2. WAN IP.....[172.17.6.18]
3. Box ID.....[12]
4. TAP Port.....[9604]
-. FIX Port.....[0] (Not Configurable).
5. Switch to Primary Configuration.
-. BCP configuration.      [Current Configuration].
7. Switch to Development Configuration.
8. Connection Type.[Lease Line]
-. Enable TAP Logging (Not Configurable).
10. Change Broker_ID.
11. Switch to Live Environment.
-. Switch to Mock Environment.      [Current Configuration].
-. Save.
-. Save & exit.
0. Exit.
```

### Annexure - 3

#### TAP configuration for Re-login session from DR site on Saturday, April 09, 2016

##### a ) INTEGRATED WINDOWS TAP CONFIGURATION

- 1) Start TCMS.
- 2) Under the menu bar, select the TAB named 'TAP'.
- 3) Go to TAP Configuration and select the market segment you want to configure.
- 4) In the configuration dialog, select "BCP" Radio Button, below that select "Live" radio button, after which your screen will look like this:

**IPO - Configuration**

Broker ID : 2101

TAP Configuration

Box ID : 12

Local IP : 172 . 17 . 4 . 39

WAN IP : 172 . 17 . 4 . 39

TAP Port : 9604

FIX Port : 0

Connection Type :  Lease Line  VSAT

Enable TAP Logging :

Host Configuration

Primary  BCP  DEV

TAP will connect to BCP Environment.  
Select Live or Mock.

Live  Mock

Save Exit

- 5) On clicking Save,  
Prompt below is just a confirmation asked when respective TAP is running.

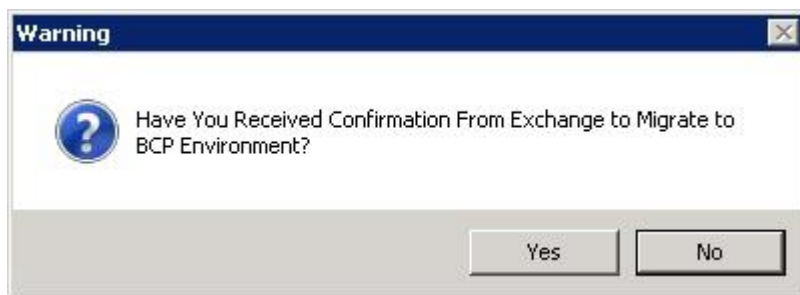
**Warning**

TAP will restart to take changes into effect. Do you want to continue?

Yes No

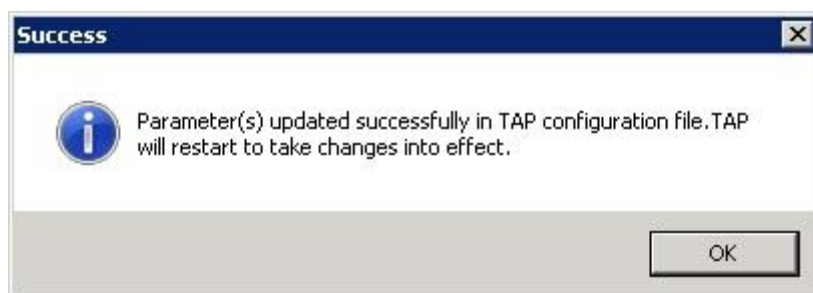
Select Yes

6) Confirmation to Save BCP Environment



Select Yes

- 7) On successful modification, TCMS user will get a response “**Parameter(s) updated successfully in Tap configuration file**” for that particular market as shown in the fig. below. Thus indicating that the changes made are reflected correctly.





## b) INTEGRATED LINUX TAP CONFIGURATION

- 1) Start the TCMS.
- 2) Select option TAP configuration Menu.
- 3) Then select particular market type, in which you want to make the changes
- 4) To connect to BCP Live environment please select the option 'Switch to BCP Configuration' and then make sure "Switch to Live Environment" option is selected

```
1. Local IP.....[172.17.6.18]
2. WAN IP.....[172.17.6.18]
3. Box ID.....[12]
4. TAP Port.....[9604]
-. FIX Port.....[0] (Not Configurable).
-. PRIMARY Configuration.      [Current Configuration].
6. Switch to BCP Configuration.
7. Switch to Development Configuration.
8. Connection Type.[Lease Line]
-. Enable TAP Logging (Not Configurable).
10. Change Broker_ID.
-. Switch to Live Environment.  [Current Configuration].
12. Switch to Mock Environment.
-. Save.
-. Save & exit.
0. Exit.
*****

Enter parameter number to modify : 6

Have You Received Confirmation From Exchange to Migrate to BCP Environment.

Do you want to continue (Y/N)? : y

***** [ TAP IPO Configuration Menu ] *****

Broker ID.....[5678]

1. Local IP.....[172.17.6.18]
2. WAN IP.....[172.17.6.18]
3. Box ID.....[12]
4. TAP Port.....[9604]
-. FIX Port.....[0] (Not Configurable).
5. Switch to Primary Configuration.      [Current Configuration].
-. BCP configuration.*
7. Switch to Development Configuration.
8. Connection Type.[Lease Line]
-. Enable TAP Logging (Not Configurable).
10. Change Broker_ID.
-. Switch to Live Environment.  [Current Configuration].
12. Switch to Mock Environment.
13. Save.
14. Save & exit.
0. Exit without saving.
```

5) Then select 'Save' or 'Save & Exit'.

```
Broker ID.....[5678]

1. Local IP.....[172.17.6.18]
2. WAN IP.....[172.17.6.18]
3. Box ID.....[12]
4. TAP Port.....[9604]
-. FIX Port.....[0] (Not Configurable).
5. Switch to Primary Configuration.      [Current Configuration].
-. BCP configuration.*
7. Switch to Development Configuration.
8. Connection Type.[Lease Line]
-. Enable TAP Logging (Not Configurable).
10. Change Broker_ID.
-. Switch to Live Environment.      [Current Configuration].
12. Switch to Mock Environment.
13. Save.
14. Save & exit.
0. Exit without saving.
*****

Enter parameter number to modify : 13

Parameter(s) updated successfully in TAP configuration file. Start TAP Application.

***** [ TAP IPO Configuration Menu ] *****

Broker ID.....[5678]

1. Local IP.....[172.17.6.18]
2. WAN IP.....[172.17.6.18]
3. Box ID.....[12]
4. TAP Port.....[9604]
-. FIX Port.....[0] (Not Configurable).
5. Switch to Primary Configuration.
-. BCP configuration.      [Current Configuration].
7. Switch to Development Configuration.
8. Connection Type.[Lease Line]
-. Enable TAP Logging (Not Configurable).
10. Change Broker_ID.
-. Switch to Live Environment.      [Current Configuration].
12. Switch to Mock Environment.
-. Save.
-. Save & exit.
0. Exit.
```